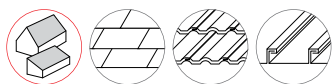


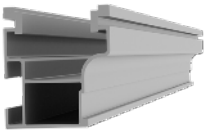
CrossRail System

PRODUCT SHEET

- ▶ High quality, German-engineered system for residential and commercial installations
- ▶ 4 rail sizes available to suit all structural conditions
- ▶ Universal components for all rail types
- ▶ Use 2 innovative components to turn this system into Shared Rail or Tilt Up
- ▶ MK3 technology provides highest rail engagement
- ▶ Roof attachments for all roof types
- ▶ 100% code compliant, structural validation for all solar states
- ▶ Fast installation with minimal component count result in low total installed cost

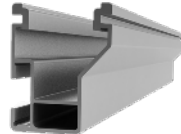


Components



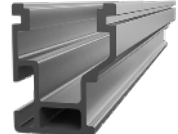
CrossRail 44-X

| Part Number | Description |
|-------------|----------------------------|
| 4000019 | CrossRail 44-X, 166", Mill |
| 4000020 | CrossRail 44-X, 166", Dark |
| 4000021 | CrossRail 44-X, 180", Mill |
| 4000022 | CrossRail 44-X, 180", Dark |



CrossRail 48-X

| Part Number | Description |
|-------------|----------------------------|
| 4000662 | CrossRail 48-X, 166", Mill |
| 4000663 | CrossRail 48-X, 166", Dark |



CrossRail 48-XL

| Part Number | Description |
|-------------|-----------------------------|
| 4000695 | CrossRail 48-XL, 166", Mill |
| 4000705 | CrossRail 48-XL, 166", Dark |



CrossRail 80

| Part Number | Description |
|-------------|-----------------------------|
| 4000508 | CrossRail 80 168" Rail Mill |



L-Foot & T-Foot

| Part Number | Description |
|-------------|--------------------------|
| 4000630 | L-Foot Slotted Set, Mill |
| 4000631 | L-Foot Slotted Set, Dark |
| 4000080 | T-Foot X 6" Kit, Mill |



K2 Metal Flashings

| Part Number | Description |
|-------------|-------------------------|
| 4000156 | K2 Flash Comp Kit, Mill |
| 4000157 | K2 Flash Comp Kit, Dark |



Splice Foot X & XL

| Part Number | Description |
|-------------|---------------------------|
| 4000131 | Splice Foot X, Set, Mill |
| 4000162 | Splice Foot XL, Set, Mill |
| 4000115 | Splice Foot Screw, m5x60 |



Tile Hooks

| Part Number | Description |
|-------------|-----------------------------------|
| 4000034 | Flat Tile Hook Set, w/Lags |
| 4001294 | Tile Hook 3S Wide Base w/Hardware |



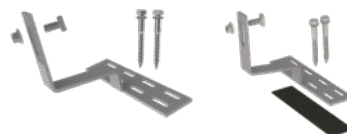
Universal Standard Hook

| Part Number | Description |
|-------------|--|
| 4000142 | Universal Standard Hook +2, 5.5" Base, Kit |
| 4000142-B | USH +2, 5.5" Base Kit, w/Butyl |



Flat Tile Hook X

| Part Number | Description |
|-------------|-------------------------------|
| 4000141 | Flat Tile Hook X, Kit |
| 4000141-B | Flat Tile Hook X Kit, w/Butyl |



Universal Standard Hook
Hook, 9" Base

| Part Number | Description |
|-------------|---------------------------------------|
| 4000140 | Universal Standard Hook, 9" Base, Kit |
| 4000140-B | USH, 9", Base Kit, w/Butyl |



Standing Seam PowerClamps

| Part Number | Description |
|-------------|---|
| 4000016 | Standing Seam PowerClamp, Mini, Set |
| 4000017 | Standing Seam PowerClamp, Standard, Set |



Corrugated Power Clamp, Kit

| Part Number | Description |
|-------------|----------------------------|
| 4000307 | Corrugated PowerClamp, Kit |



Trapezoidal Power Clamp, Kit

| Part Number | Description |
|-------------|-----------------------------|
| 4000308 | Trapezoidal PowerClamp, Kit |



CrossRail Mid Clamp

| Part Number | Description |
|-------------|---|
| 4000601-H | CR MC Silver, 30-47mm, Shared RL 30-37mm 13mm Hex |
| 4000602-H | CR MC Dark, 30-47mm, Shared RL 30-37mm 13mm Hex |
| 4000688-H | SR MC Silver, 38-50mm, Shared RL 28-46mm 13mm Hex |
| 4000689-H | SR MC Silver, 38-50mm, Shared RL 28-46mm 13mm Hex |



CrossRail End Clamp

| Part Number | Description |
|-------------|-----------------------|
| 4000090 | CR EC Silver, 30-40mm |
| 4000091 | CR EC Dark, 30-40mm |
| 4000092 | CR EC Silver, 40-47mm |
| 4000093 | CR EC Dark, 40-47mm |



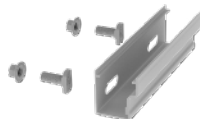
Yeti Clamp

| Part Number | Description |
|-------------|-------------------------------------|
| 4000050-H | Yeti Hidden EC for CR, 13mm Hex Set |



Aluminum End Clamp

| Part Number | Description |
|-------------|---------------------------------|
| 4005344 | CrossRail EC Silver, AL 32-33mm |
| 4005345 | CrossRail EC Silver, AL 30-31mm |
| 4005169 | CrossRail EC Silver, AL 34-36mm |
| 4005290 | CrossRail EC Silver, AL 37-38mm |
| 4005170 | CrossRail EC Silver, AL 39-41mm |
| 4005291 | CrossRail EC Silver, AL 42-44mm |
| 4005171 | CrossRail EC Silver, AL 45-47mm |
| 4005292 | CrossRail EC Silver, AL 48mm |



CrossRail Rail Connector

| Part Number | Description |
|-------------|--|
| 4000051 | Rail Connector CR 44-X, Set, Mill |
| 4000052 | Rail Connector CR 44-X, Set, Dark |
| 4000385 | RailConn CR48-X,48-XL Struct Set, Mill |
| 4000386 | RailConn CR48-X,48-XL Struct Set, Dark |
| 4001196 | Rail Connector UL 2703 Set, CR80, Mill |



End Caps

| Part Number | Description |
|-------------|---------------------------------------|
| 4000176 | EndCap 44-X, K2 |
| 4000431 | CrossRail Flat EndCap, CR 48-X, 48-XL |
| 4001221 | EndCap, Black, CR80 |



Bonding & Grounding

| Part Number | Description |
|-------------|--------------------------------------|
| 4000629-H | CR Microinverter & Opt, 13mm Hex Kit |
| 4000006-H | Everest Ground Lug, 13mm Hex |
| 4000083 | MLPE, Module Frame Mount, Kit |



Wire Management

| Part Number | Description |
|-------------|--|
| 4000069 | Wire Management Clip, TC |
| 4000382 | HEYClip SunRunner Cable Slip SS, S6404 |
| 4005394 | Wire Management Clip, Omega, Black |



CR 48-X/48-XL Sleeve

| Part Number | Description |
|-------------|--------------------------------------|
| 4000177 | Sleeve CR 44-X |
| 4000583 | CrosRail 3" Black Sleeve 48-X, 48-XL |